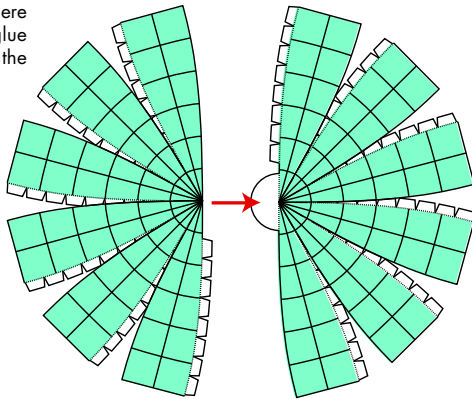


## CREATIVE PARK

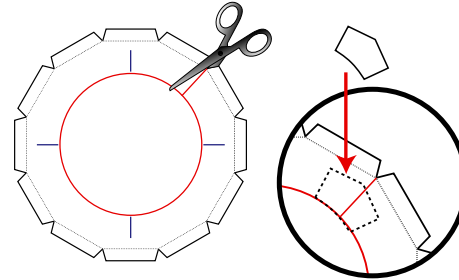
<http://www.canon.com/c-park/en/>

### Assembling the globe

1. Cut out the northern hemisphere A and northern hemisphere B parts and glue together using the central tabs.

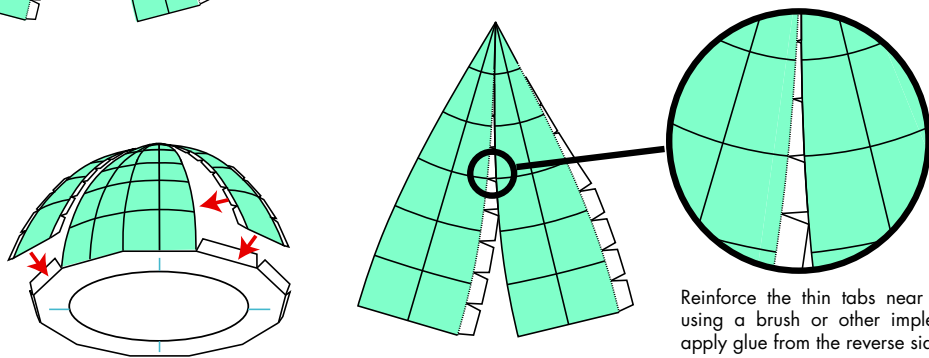


2. Cut out the northern hemisphere base. Use scissors to cut out the center hole. Cut out the center by first cutting with scissors along the red line connecting the center to the exterior.



After cutting out the hole, glue the reinforcement to the reverse side, taking care to ensure it doesn't obstruct the fold lines.

3. Glue the northern hemisphere to the northern hemisphere base so that its shape is semispherical. To fit the parts together correctly, gently fold the tabs inward, then align the latitudinal lines on the surface while holding the northern hemisphere base down with your finger and pulling gently on the tabs. Assemble the southern hemisphere in the same way.



Reinforce the thin tabs near the top, using a brush or other implement to apply glue from the reverse side.

Before starting assembly: Writing the name of each section on its back side before cutting out the sections is highly recommended.  
(\* This way, you can be sure which section is which even after cutting out the sections.)

→ Indicates where sections should be glued together.  
→ Indicates where to insert sections. Do not glue the sections together.

\* This model was designed for Papercraft and may differ from the original in some respects.

### Assembly Instructions : Five A4 sheets (No. 1 to No. 5)

\* Build the model by carefully reading the Assembly Instructions, in the parts sheet page order.

\*Hint: Trace along the folds with a ruler and an exhausted pen (no ink) to get a sharper, easier fold.

### Assembly Instructions

	<b>Mountain fold (dotted line)</b> Make a mountain fold.		<b>Glue</b> The glue spot (colored dot) shows where to apply the glue.
	<b>Valley fold (dashed and dotted line)</b> Make a valley fold.		<b>Glue spot (Red dot)</b> Glue parts with the same number together.
	<b>Scissors line (solid line)</b> Cut along the line.		<b>Glue spot (Green dot)</b> Glue within the same part.
	<b>Cut in line (solid line)</b> Cut along the line.		<b>Glue spot (Blue dot)</b> Glue to the rear of the other part.

### Tools and materials

Scissors, set square, glue (We recommend stick glue), pencil, used ballpoint pen, toothpicks, tweezers, (useful for handling small parts)

### Assembly tip

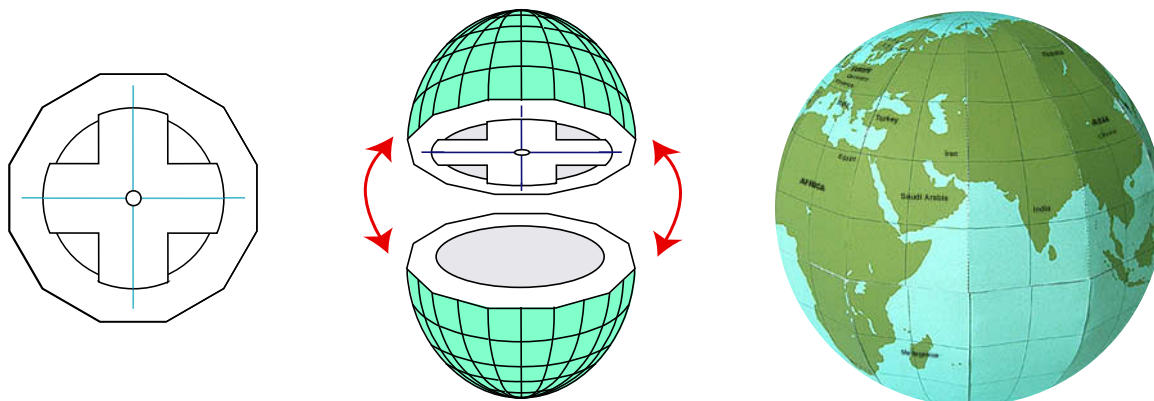
Before gluing, crease the paper along mountain fold and valley fold lines and make sure rounded sections are nice and stiff.

### Caution

Glue, scissors and other tools may be dangerous to young children so be sure to keep them out of the reach of young children.

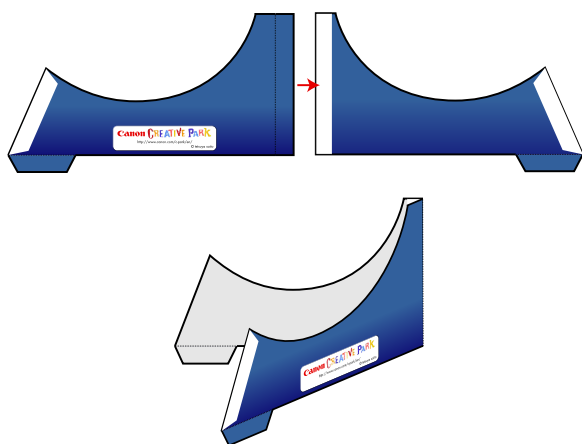
4. Attach the center hole plate to the northern hemisphere to fix the paper core in position. Attach in place by aligning the blue lines on the center hole plate to those on the northern hemisphere base.

5. Align the Americas, Africa, and other continents when attaching the northern hemisphere to the southern hemisphere.

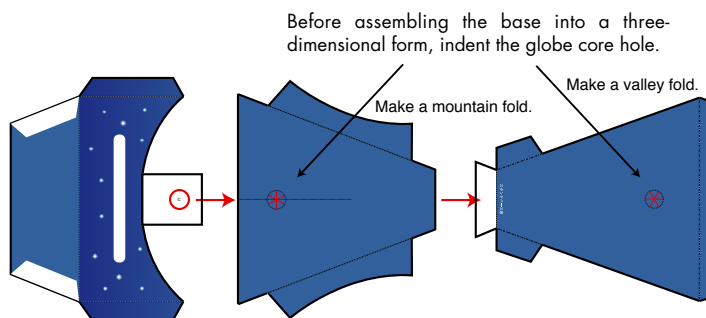


## Assembling the globe stand

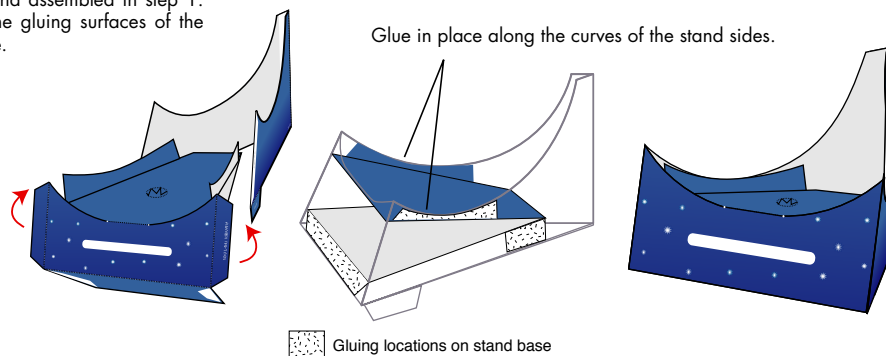
1. Cut out the sides of the stand and assemble as shown in the illustration.



2. Attach the stand base bottom to the stand base, folding each of the tabs.

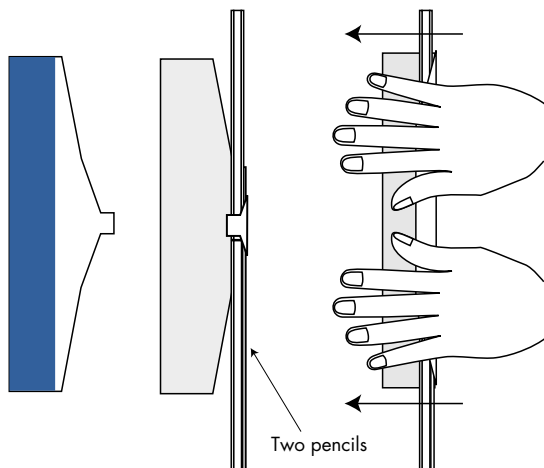


3. Combine the stand base with the stand assembled in step 1. Complete the stand by curving up the gluing surfaces of the stand sides, then gluing these in place.

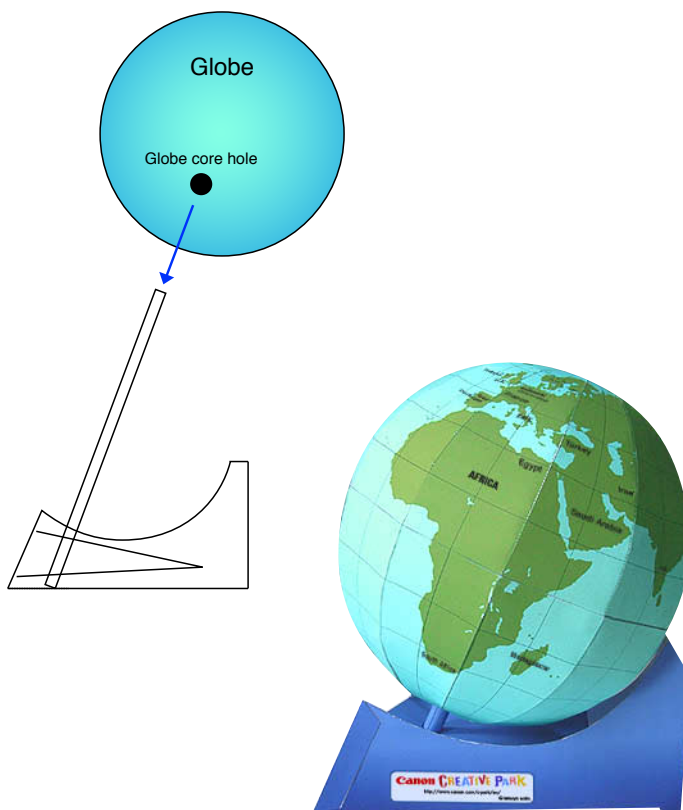


# Globe : Assembly Instructions

4. Assemble the globe core. Roll this part using two new (or long) pencils. Roll tightly, until it's around 1 cm in diameter, then glue it together.



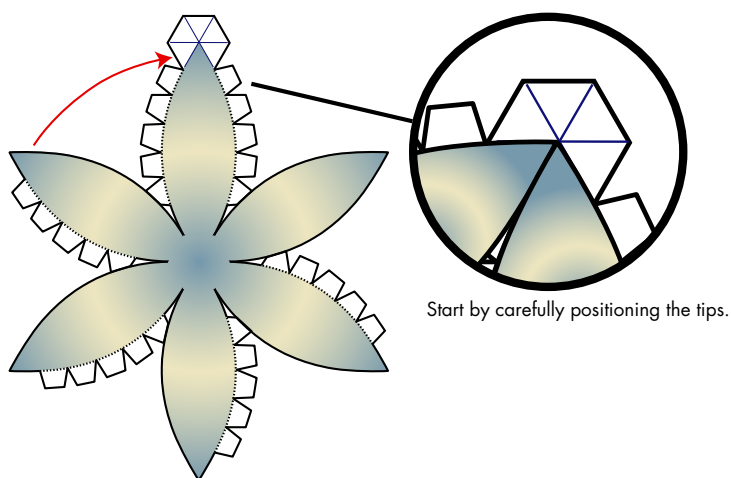
5. Insert the globe core into the stand, then place the globe in position from above.



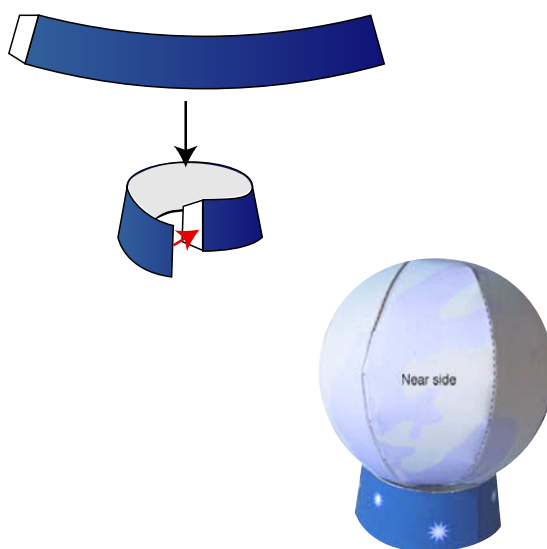
Finished!

## Assembling the moon and the moon stand

1. Assemble the moon by gluing the tips of the other five parts to the hexagonal area. Glue the side tabs after first gluing the tips into position.



2. Roll the moon stand and glue the tab.

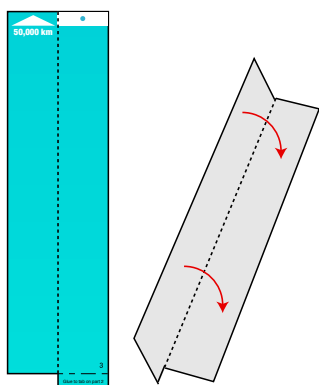


Finished!

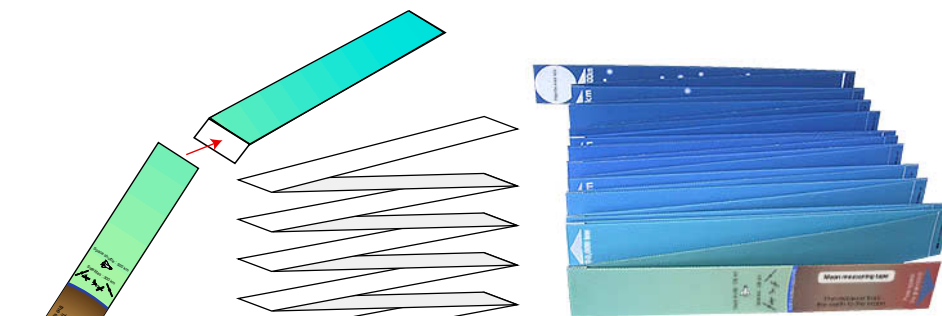
- The moon measuring tape showing the distance between the earth and the moon is available as a separate file. Use it as a teaching aid or for other purposes.

## Assembling the moon measuring tape

1. Fold inward along the fold line, then glue both interior sides together.



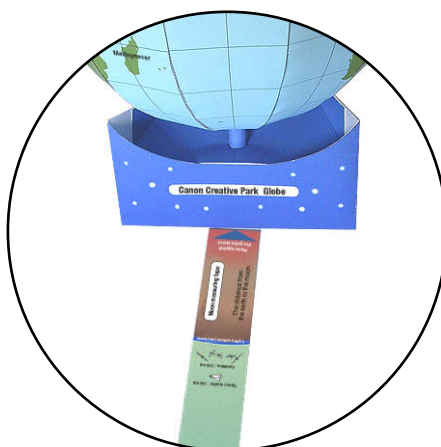
2. Assemble all 23 parts in the same way, then glue them to each other in sequence, beginning with part 1, so that the measuring tape can fold up.



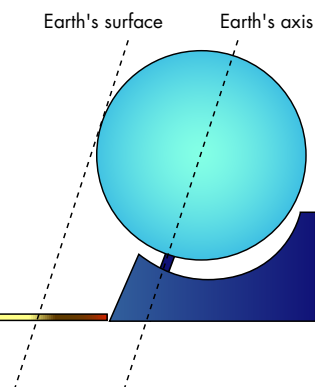
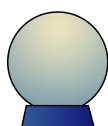
Finished!

## Using the moon measuring tape

Place the moon measuring tape directly in front of the globe stand and position the moon on the spot shown on the tape to get an idea of the distance between the earth and the moon. A look at the spots shown on the tape shows how surprisingly close to the earth satellites and the space shuttle orbit.



Place the moon at its designated location.



● This model depicts a cross-section of the earth. Use it as a teaching aid or for other purposes.

## Assembling the cross-section of the earth

1. Fold the base using a mountain fold.
2. Glue the support to the rear side of the main body.

