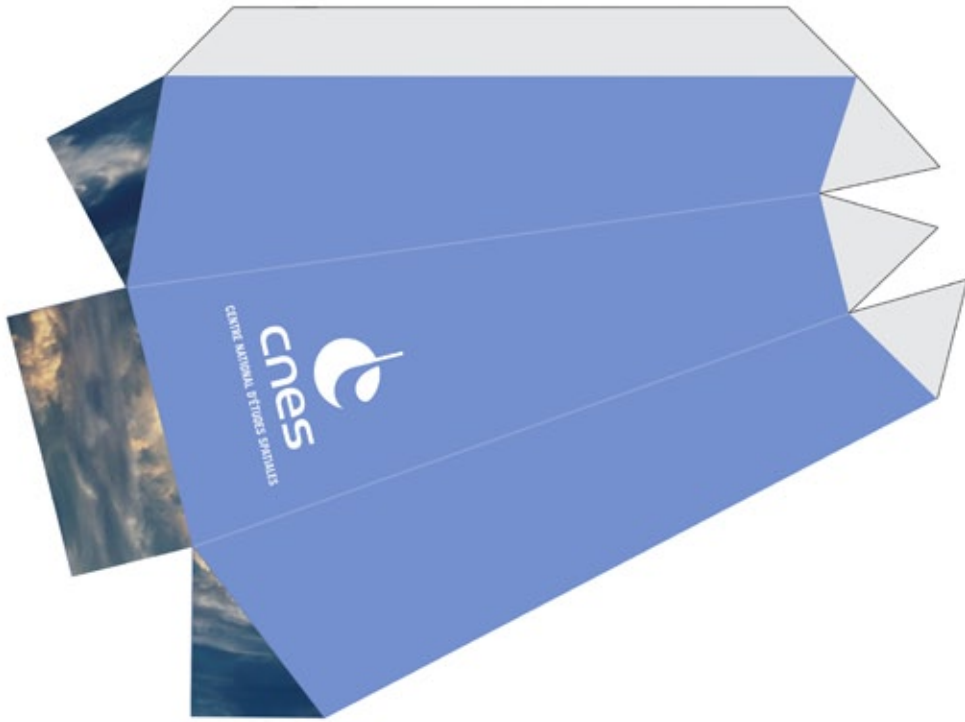


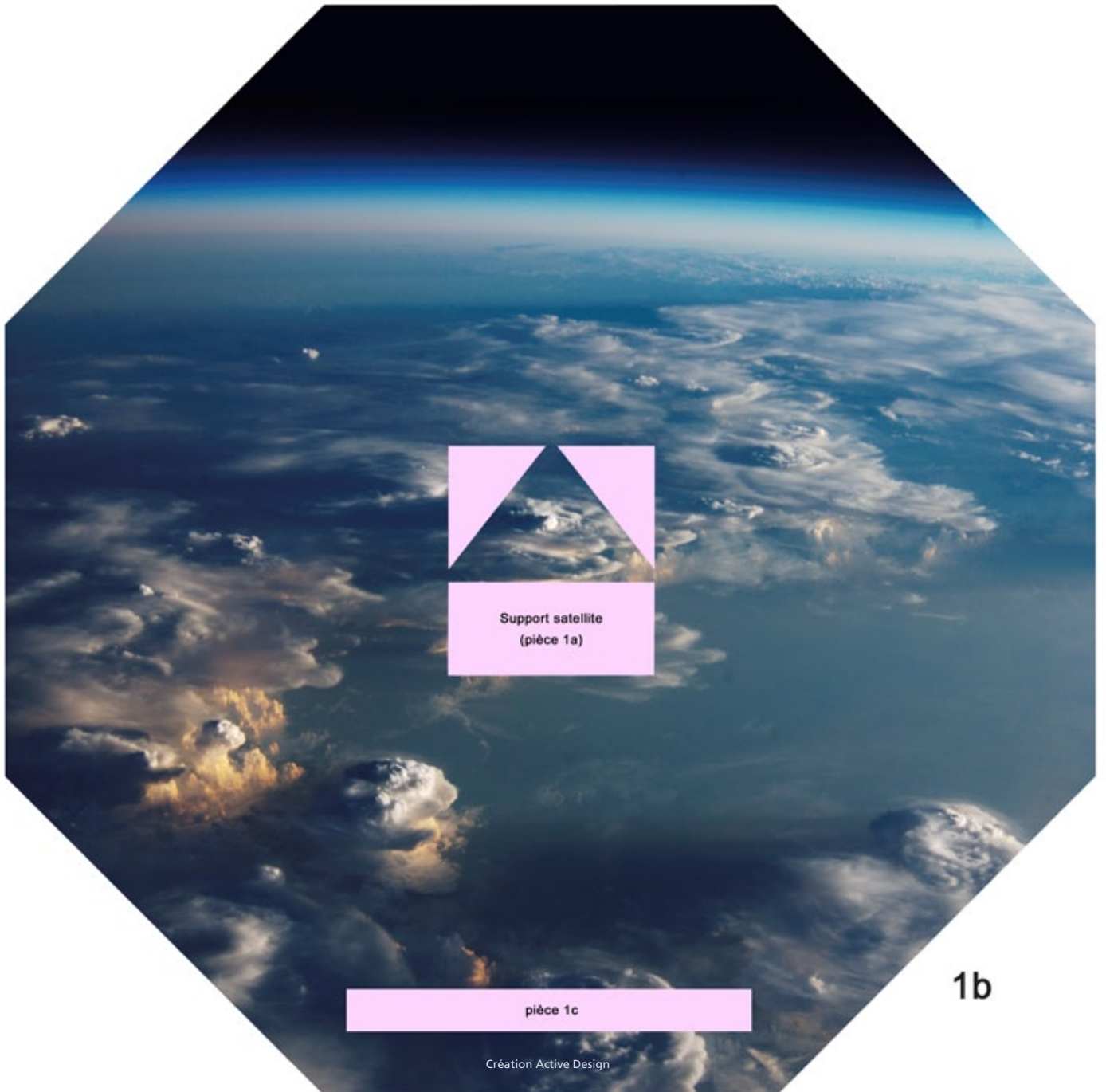
PLANCHE 1



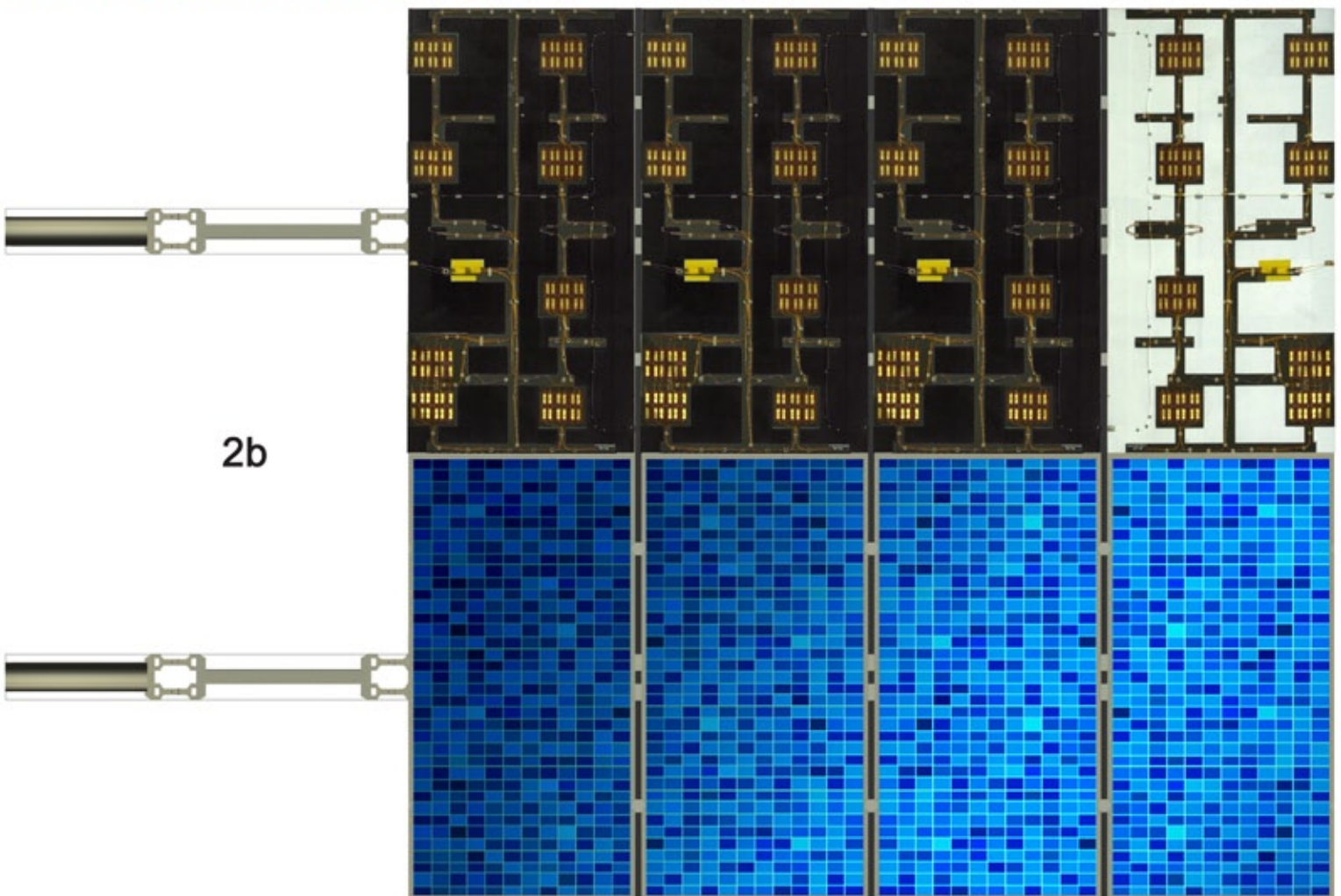
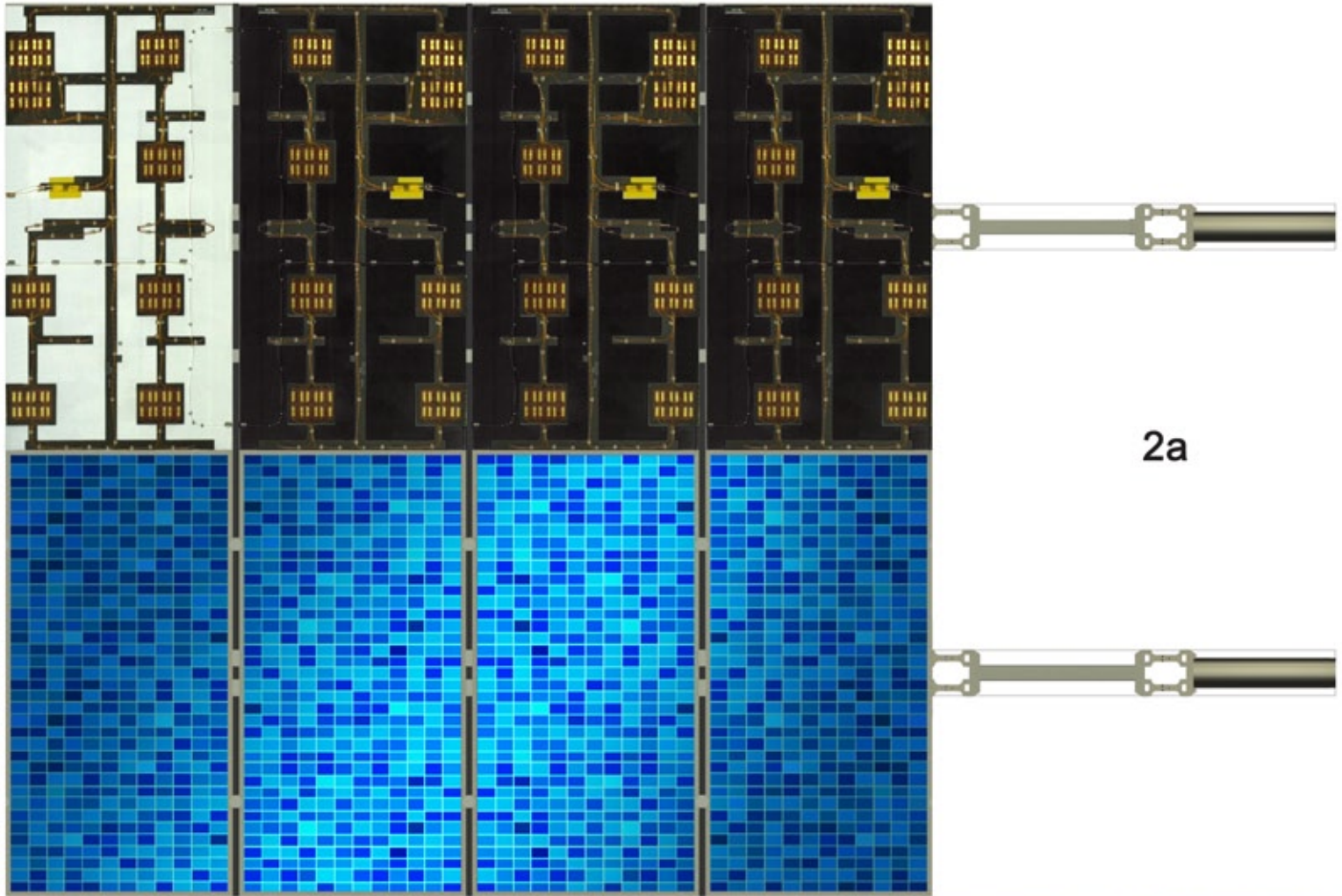
1a



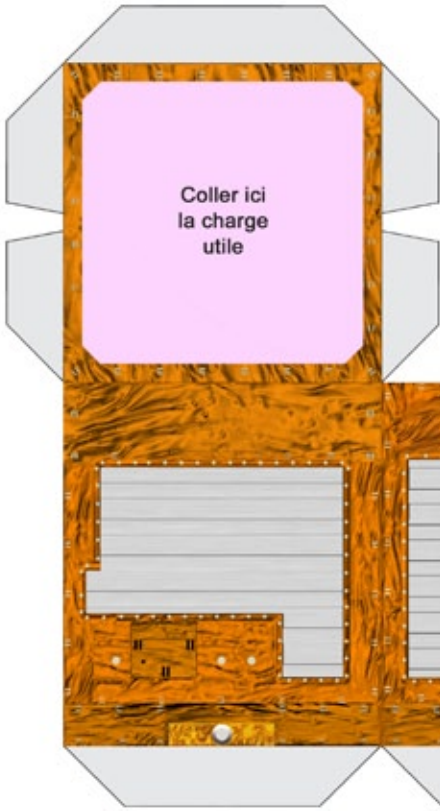
1c



1b



3a

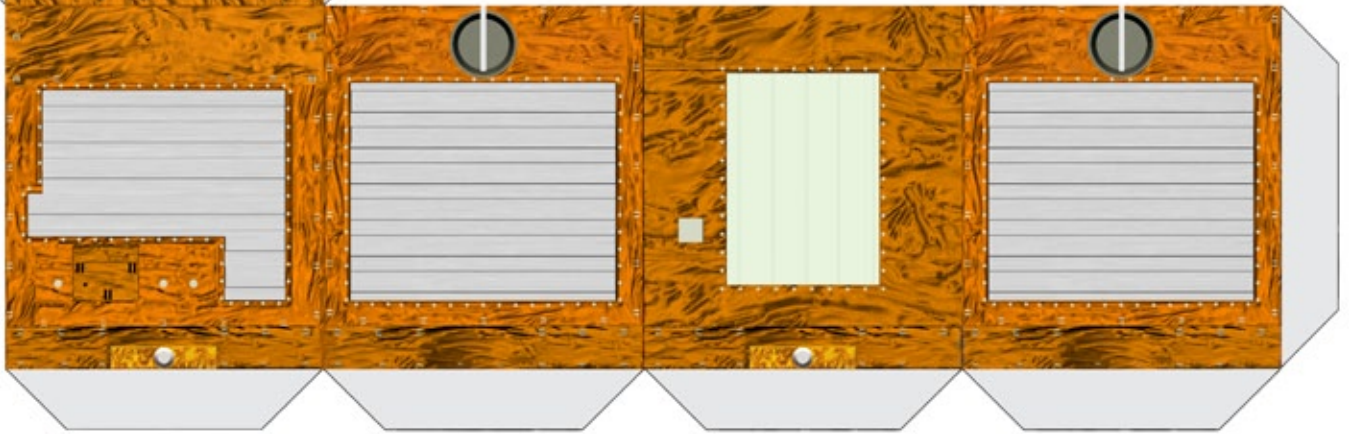


3c

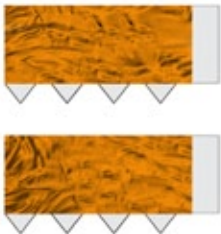
3d



*Evider la zone hachurée en vert*



Pièces optionnelles

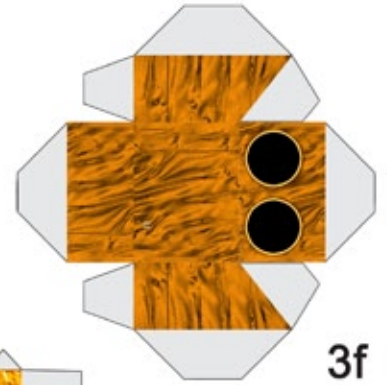


3g

*Teinter le verso des pièces 3g en noir*



3e



3f



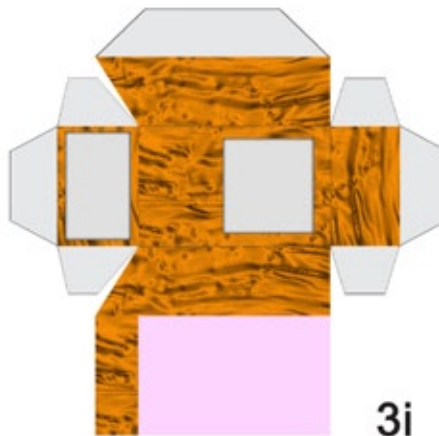
3b

*Teinter le verso de la pièce 3b en jaune orangé*



3h

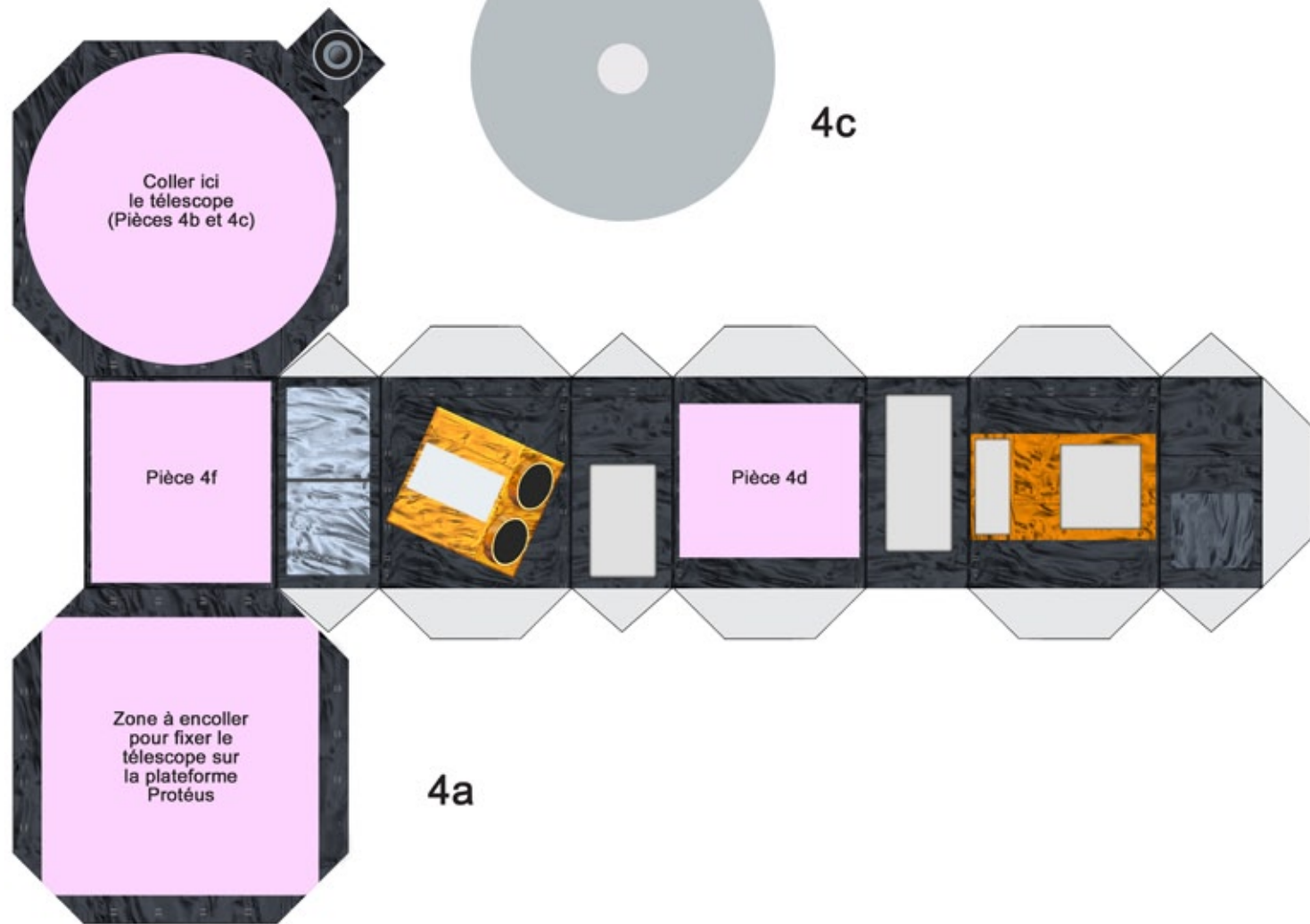
*Teinter le verso des pièces 3h en noir*



3i



3j



*Teinter le verso de la pièce 4h en noir*

